

Discover the most unique & unusual event spaces in the North East





Discover Science, Technology and History



Discovery Museum

Discovery Museum is housed in an ornate, gothic, high Victorian building and provides a fascinating insight into Tyneside's engineering, shipbuilding and entrepreneurial heritage, with eclectic exhibits and interactive displays.

A fascinating venue for corporate events, it boasts a number of versatile spaces, from the impressive, vaulted Great Hall, which can hold up to 380 guests, to the small meeting room, which holds 15, when laid out in boardroom style.

In addition, up to 100 guests can dine – or 200 can enjoy drinks and canapés - in the shadow of the steamship Turbinia, once the fastest ship in the world and the centrepiece of the ground floor exhibition.

Alternatively, the Café holds 80 for dinner and can cater for 100 for drinks and canapés, the Science Maze holds 40 for dinner and can cater for 100 for drinks and canapés and the Classroom holds 30 when laid out in boardroom style.

Last, but definitely not least, our Story of the Tyne space is an ideal venue for drinks receptions. It features an impressive and unique display of ship models, showcases 150 years of shipbuilding, alongside full size boats and stories about how the ecology of the river has changed.

The whole museum can hold 1000 guests for large scale events and conferences. Along with its choice of rooms and spaces – all of which are available for exclusive, private hire in the evening - Discovery Museum provides a full range of AV equipment, catering facilities and museum tours.

“The reception and dinner were a great success. Thanks to yourself and all the staff at the museum who were very attentive. Our delegates were very happy with the food and the service.”

Research Libraries UK



THE
SHIPLEY
ART GALLERY



Historic, modern and contemporary



Hatton Gallery

Tucked away in a quiet, leafy oasis at the heart of the city centre, Newcastle University's Hatton Gallery has been the focal point of cultural life in the North East since the early 20th century.

It stages a highly-regarded programme of historical, modern and contemporary art exhibitions with its permanent collection comprising more than 3,500 paintings, sculptures, prints and drawings from the Renaissance era up to the 20th century.

Now part of the Great North Museum, the Gallery - in a beautiful Grade II listed building, is a popular venue for a range of corporate and private events such as formal, seated dinners or receptions. Its various gallery spaces can be hired individually for more intimate functions or interlinked to accommodate up to 400 guests.

The Gallery is available all week for evening hire or for exclusive, private hire on Sundays. While limited parking is available, the Hatton Gallery's city centre location - it is just metres from the Haymarket Metro Station - makes it easily accessible for guests travelling by public transport.

Shipley Art Gallery

The Shipley Art Gallery in Gateshead is the region's leading gallery for art and design and an increasingly popular conference and event venue.

From its elegant, colonnaded entrance, to its perfectly proportioned Main Gallery, the Shipley Art Gallery is an excellent example of Edwardian architecture and the perfect venue for a host of events, from intimate talks and dinners to large scale receptions and banquets.

Along with the main gallery, which is often hung with a fascinating selection of the paintings for which the Shipley Art Gallery is famous, corporate or private guests can also utilise the Designs for Life Gallery, which displays more than 300 craft and design objects from around the world.

Downstairs, there is a fully-equipped learning room, which provides full data projection and blackout facilities and is an ideal location for a variety of meetings, training sessions or practical activities such as group workshops. The Shipley Art Gallery is available for exclusive, private hire all day on Sundays and Mondays as well as evenings throughout the week and can host from 70 people in a cabaret format, to 100 for a seated dinner, or 200 for a formal reception.



An inspiring, high-profile venue



Laing Art Gallery

The Laing Art Gallery, at the heart of Newcastle, is one of the city's most well known and loved venues – and not just among art lovers.

Although it is home to an impressive collection of 18th and 19th century paintings and sculptures and frequently hosts exhibitions of modern and contemporary art, it is also a popular venue for everything from meetings and conferences to seated or buffet-style lunches. Delegates can choose from a range of spaces, including the 18th and 19th Century Gallery, the walls of which are hung with works by artists such as Joshua Reynolds and Gainsborough, making an impressive setting for more formal events for up to 100 people.

Alternatively, the famous Marble Hall has provided companies from all over the North East with a spectacular, high-profile venue for social functions, product launches and events and, along with the first floor rotunda, can be hired as a reception area, holding up to 150 people.

The Northern Spirit Gallery and Activity Area on the ground floor showcases a selection of North East silver and glass with interactive screens and can hold around 90 people.

In addition, the ground floor café, with its striking stained glass window by Pre Raphaelite artist Sir Edward Burne Jones, is a versatile space hosting up to 80 seated diners and 120 standing guests.

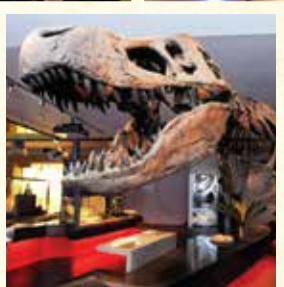
There is also a spacious, purpose-built function room, set in the heart of the Gallery which is available to hire for training, conferences and events while the entire Laing Art Gallery can be hired for exclusive, private use in the evening.

“The event was a huge success for the firm, which was in no small part thanks to the imagination of Tyne & Wear Archives & Museums and Sodexo.”

Ward Hadaway



Get your teeth into the most exciting venue



T-Rex original in the Museum of the Rockies.



Great North Museum: Hancock

The Great North Museum: Hancock not only thrills thousands of visitors each year with its collections of antiquities and curiosities, but is also an increasingly popular venue for private and corporate events.

Its main exhibition space, holding up to 500 guests, is particularly flexible as it can be divided into three separate halls - ideal for break out spaces or smaller meetings - and has white, unadorned walls, which offer the perfect backdrop against which to project corporate logos.

Alternatively, the Council Room, which hosted HM Queen Elizabeth II's visit in 2009, is a good choice for small meetings or lunches, while the Clore Room, which opens onto a patio, with a raised pond and planting, is ideal for summer barbecues or drinks receptions.

In addition, the first floor Hancock café, overlooking the landscaped gardens, can be hired for evening entertainment, while the Living Planet gallery, which holds 120 guests, houses double height displays of animals including a full size model of an elephant and a Great White shark.

The museum's state-of-the-art, digital, full cinema planetarium holds up to 26 people while a number of purposely designed meeting rooms can cater for between 40 and 300 guests.

“ Just wanted to let you know that the dinner was fantastic. The venue was wonderful and the food and wine were excellent. The lamb was superb! Everyone had a great time. ”

School of Dental Science - Newcastle University.





Conference & Events

For further information about meetings, conferences and corporate entertaining
at Tyne & Wear Archives & Museums venues, call:

0844 856 1074 or email events@twmuseums.co.uk

TYNE & WEAR
archives &
museums

sodexo
PRESTIGE

10% off
Christmas party



try
something
different
this Christmas



Discover the most unique & unusual event spaces in the North East



T-Rex original in the Museum of the Rockies.

A world of discovery, inspiration, art and achievement is open to guests, delegates and businesses at some of the North East's leading museums and galleries.

Newcastle's Great North Museum: Hancock, Discovery Museum, Laing Art Gallery and Hatton Gallery, as well as the Shipley Art Gallery in Gateshead offer companies a wide choice of meeting and conference facilities all supported by in-house catering from Sodexo Prestige.

Jam-packed with fine art, historical artefacts and fascinating exhibits, the venues, operated by Tyne & Wear Archives & Museums, guarantee that every event, from small meetings to large AGMs and receptions, is memorable – for all the right reasons.

Where else can delegates rub shoulders with dinosaurs? Where else can companies set sail for success in the shadow of a pioneering steamship and where else can guests mingle in rooms lined with world famous works of art?

When it comes to corporate hospitality our venues inspire, they impress and they inform – they are, quite simply, amazing.

Conference & Events

For further information about meetings, conferences and corporate entertaining at Tyne & Wear Archives & Museums venues, call:

0844 856 1074

or e-mail

events@twmuseums.co.uk

